

L/20/2001

OFFICE COPY

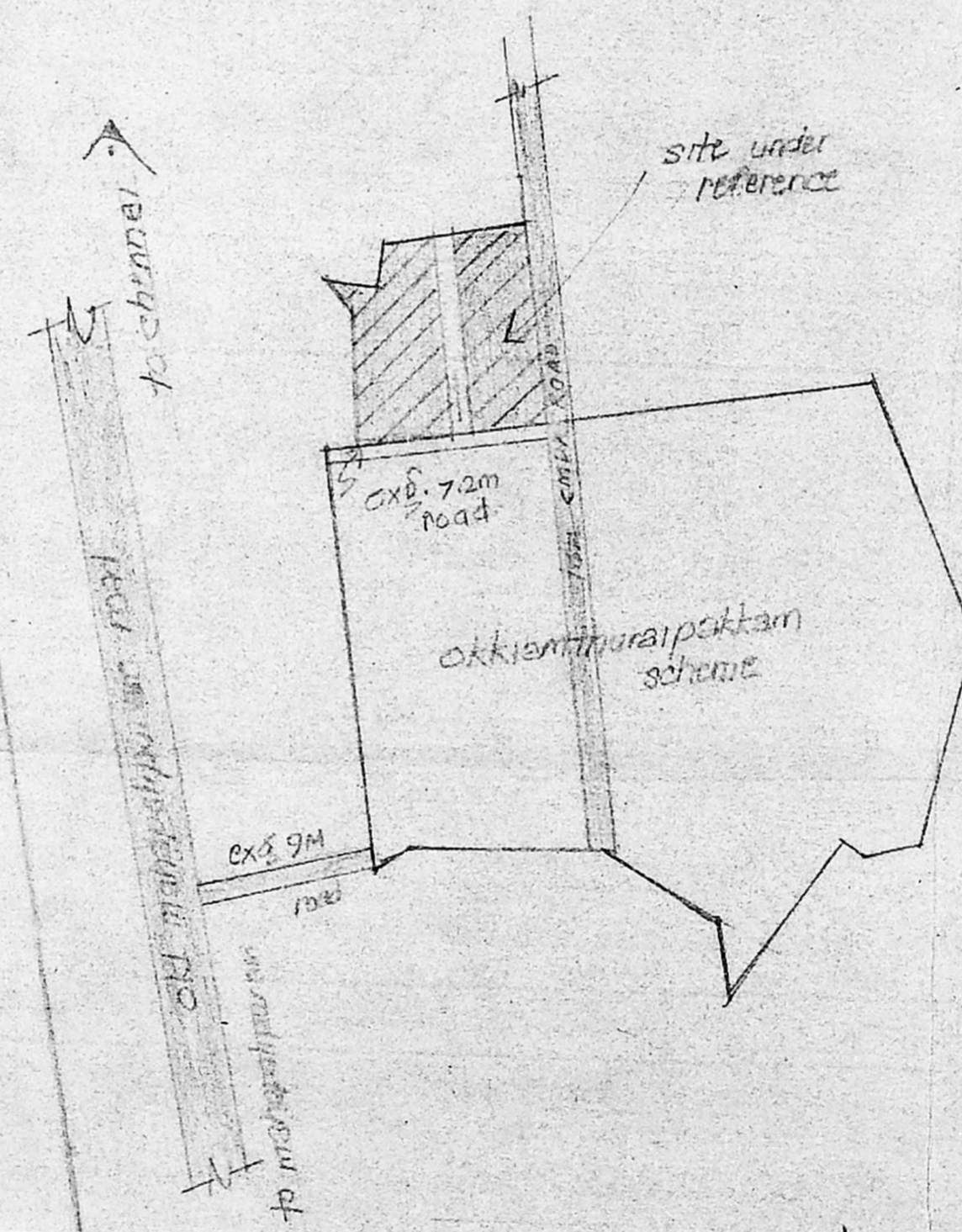
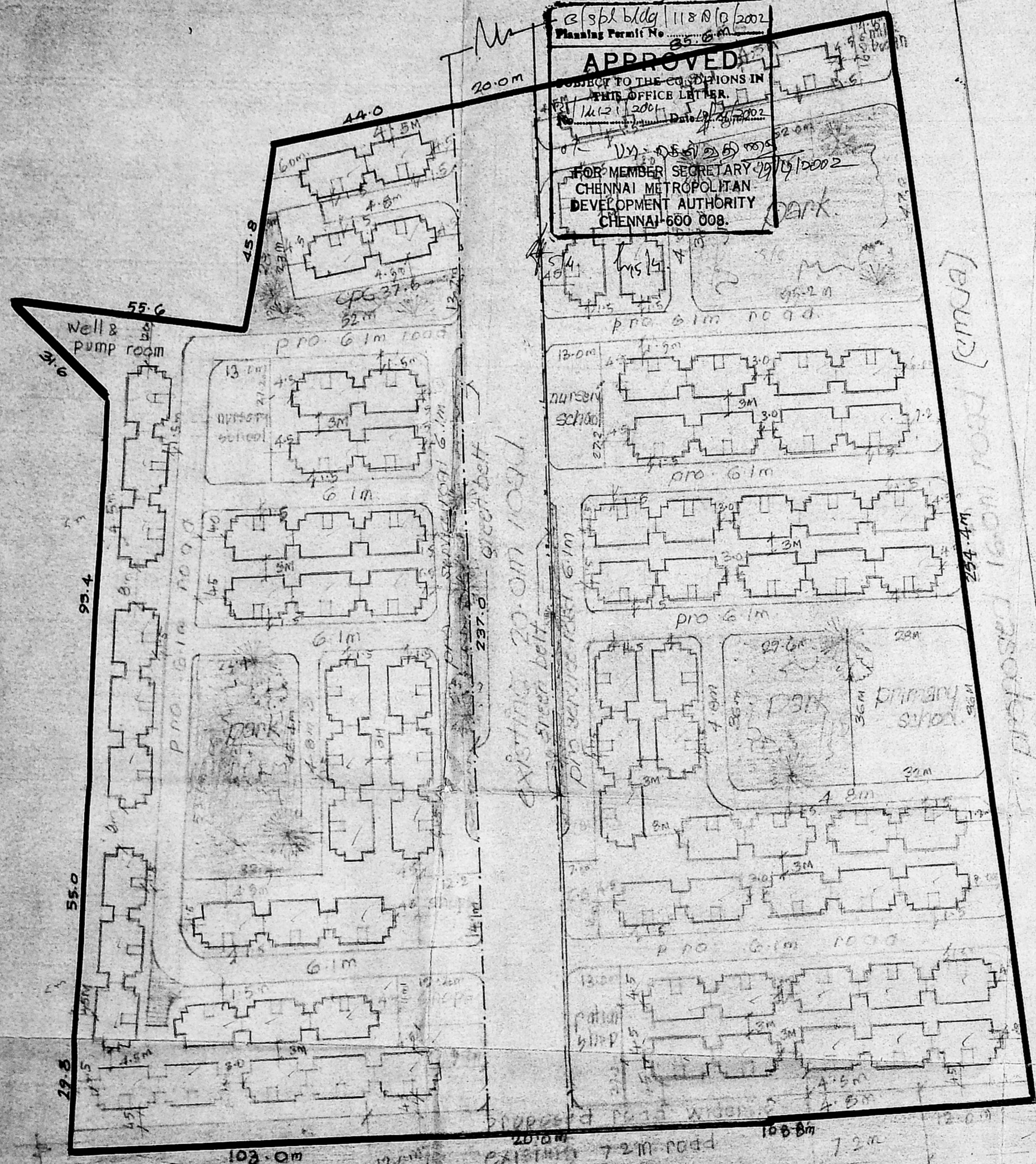
Revised Plan  
DE. 12/19/2001

3 spl bldg 118/10/2002  
 Planning Permit No. 35-6-1  
**APPROVED**  
 SUBJECT TO THE CONDITIONS IN THIS OFFICE LETTER.  
 12/12/2001 Date  
 12/12/2002 Date  
 FOR MEMBER SECRETARY  
 CHENNAI METROPOLITAN  
 DEVELOPMENT AUTHORITY  
 CHENNAI-600 008.

**CMDA (B) / P. No. 1**  
 C. No. 8.1/16(21/2K1)  
 Asst. \_\_\_\_\_  
 Scrutiny  
 P. A. 12/19  
 A.P. 12/19  
 D.P.

tamil nattu  
slum clearance board.

proposed layout of  
tenements at okkiam-  
thuraipakkam in S.N. 403/2PT



reference:  
 [as per T.D. 3/road (three storied)  
 plinth area / tenement : 21.7430 M<sup>2</sup>]

total no of tenements :  
 90 blocks of 18 m<sup>2</sup> : 90 x 18 = 1620

area details:  
 extent : 4.47 hect  
 density : 362 fam / hect  
 f.s.i : 0.79  
 plot coverage : 26.3%

land use details

USE	area in hect	%
1. residential	2.821	63.1
2. park & cps	0.9305	11.9
3. public purpose	0.2265	5.1
4. commercial	0.0497	1.1
5. roads	0.8423	18.8
total	4.47 hect	100%

scale : 1" = 66' (1:300)

16/12/2001  
 planning asst.  
 24/12/01  
 asst. planner  
 deputy planner

key plan  
 not to scale

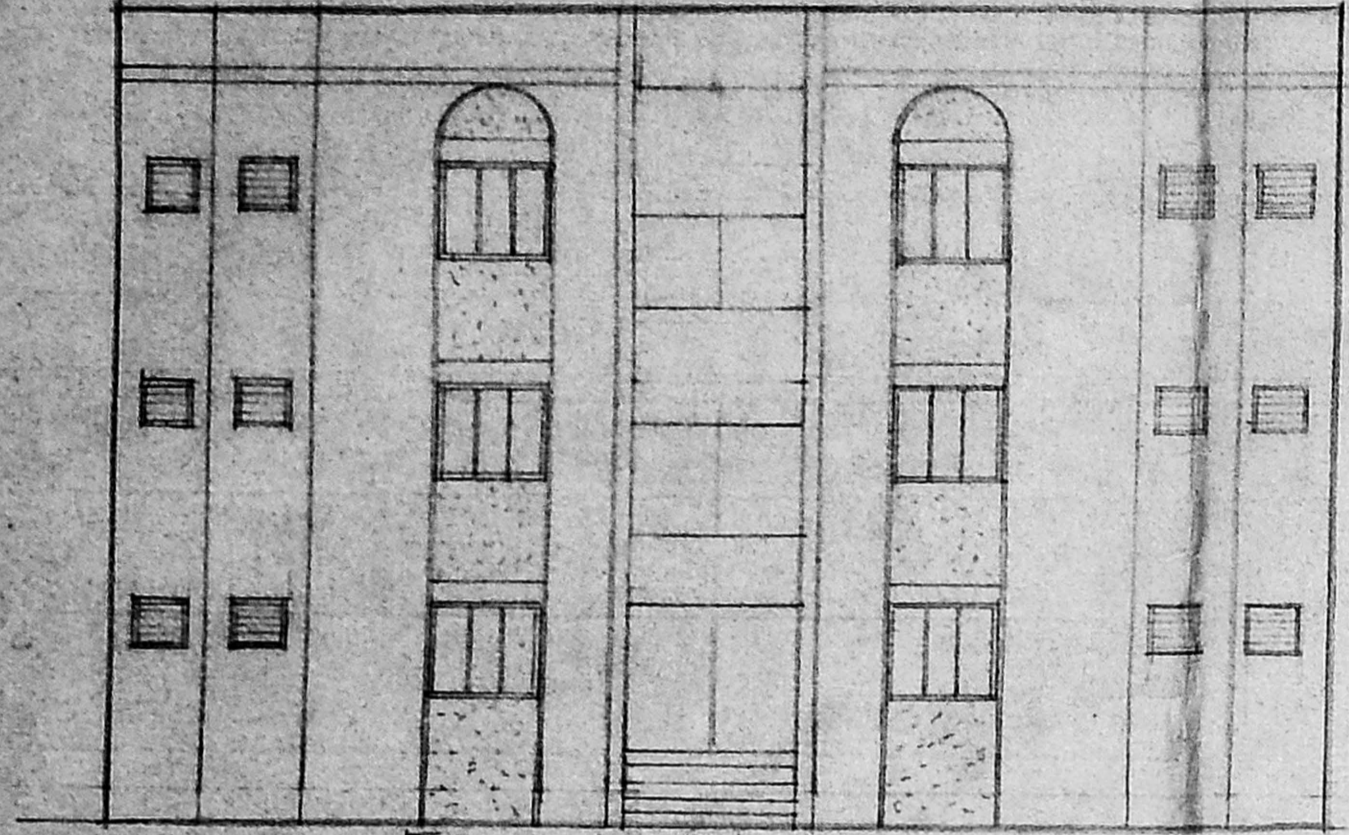
senior planner  
 chief engineer

L/20/2001

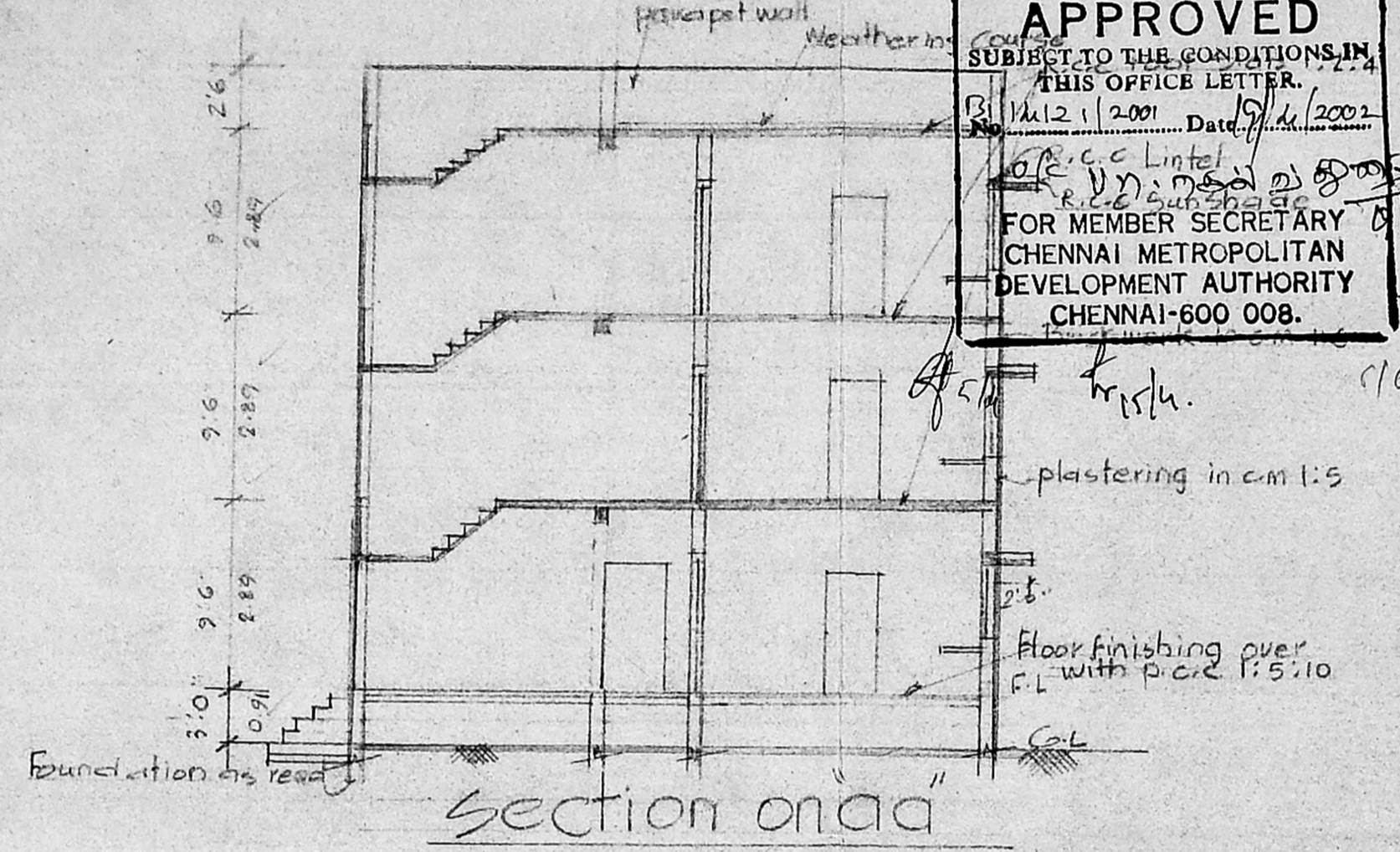
OFFICE COPY

12/5/2001 118 B/13/2001  
Planning Permit No.

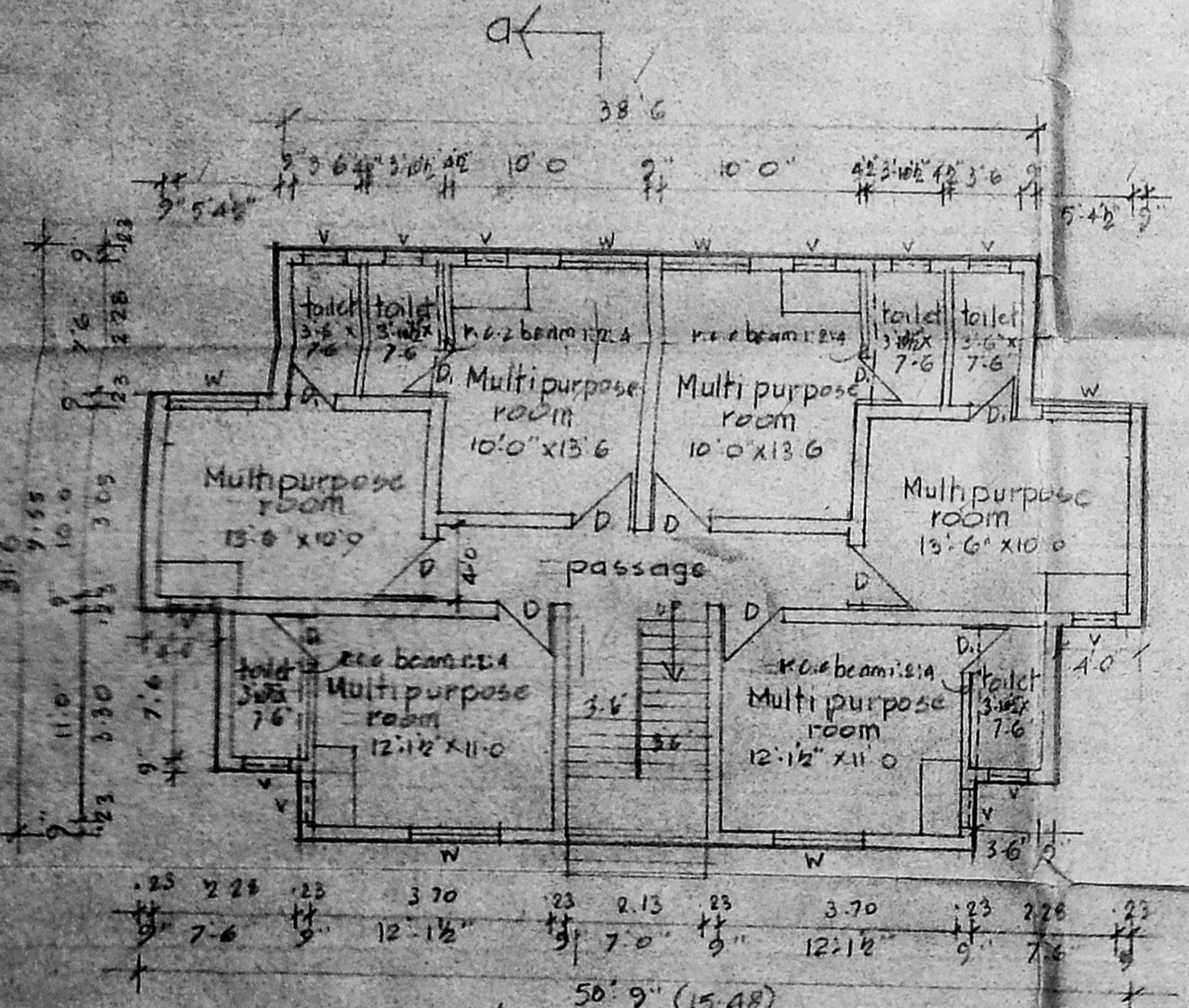
**APPROVED**  
SUBJECT TO THE CONDITIONS IN THIS OFFICE LETTER.  
Rt. No. 12/1/2001 Date: 12/14/2001  
FOR MEMBER SECRETARY  
CHENNAI METROPOLITAN  
DEVELOPMENT AUTHORITY  
CHENNAI-600 008.



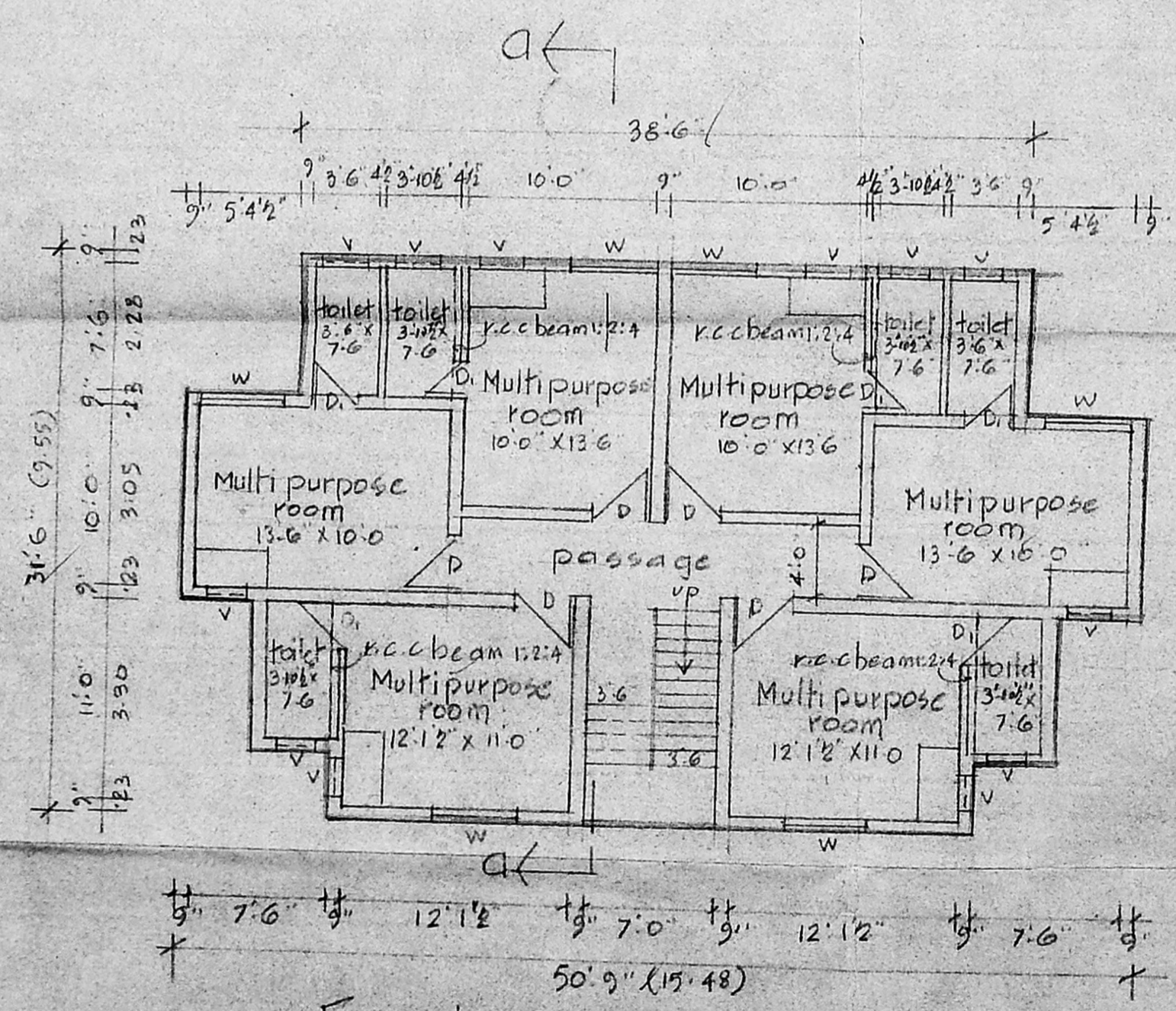
Front Elevation



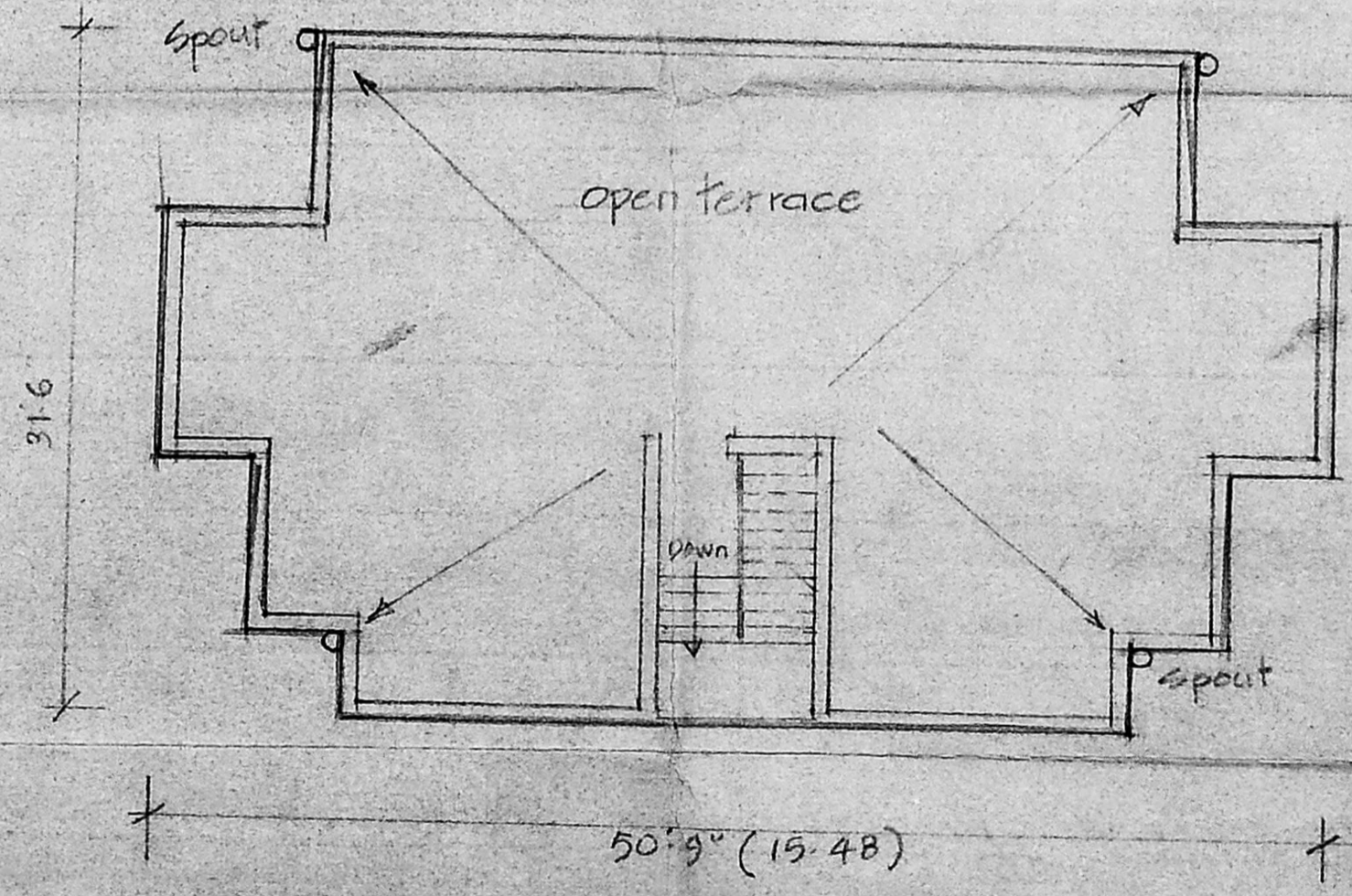
Section on 'aa'



Ground Floor Plan



First Floor Plan & Typical Floor Plan



terrace Floor plan

tamil nadu  
Slum Clearance Board

CMDA (B) / No. 1  
C. No. 3/1/2001  
Assl. ...  
Scrutiny ...  
design no. 3/2001  
(3 storeyed)  
A.P. ... D.P. ...

proposed construction  
of tenements of type  
design no. 3/2001  
(3 storeyed)

Scale: 1"=8'0" (1:100)

Joinery  
D. Door 3'-0" x 6'-0" (0.91 x 1.83)  
D. " 2'-6" x 6'-0" (0.76 x 1.83)  
W. Window 4'-6" x 4'-0" (1.37 x 1.22)  
V. R.C.C. Jally vent 2'-0" x 2'-0" (0.61 x 0.61)

Plinth area: 234 sqft (21.74 sqmt)/unit

T.A. 4.07.2001  
Planning Asst. Asst. Planner.

Senior Planner Chief engineer

T.D. 18/2001